



Training Module: County APD Workflow

**County APD Process Training
November 16, 2007**



Agenda

- Introduction
- Module Objectives
- Major Topics
 - County APD Re-Engineering Changes
 - APD Workflow – County Initial Submission
 - APD Workflow – County Repeated Submission
- Reference Information
- Q&A

Introduction

The County APD workflow process is created to show the end-to-end APD review process (County and State) necessary to create, review, and disposition an APD.

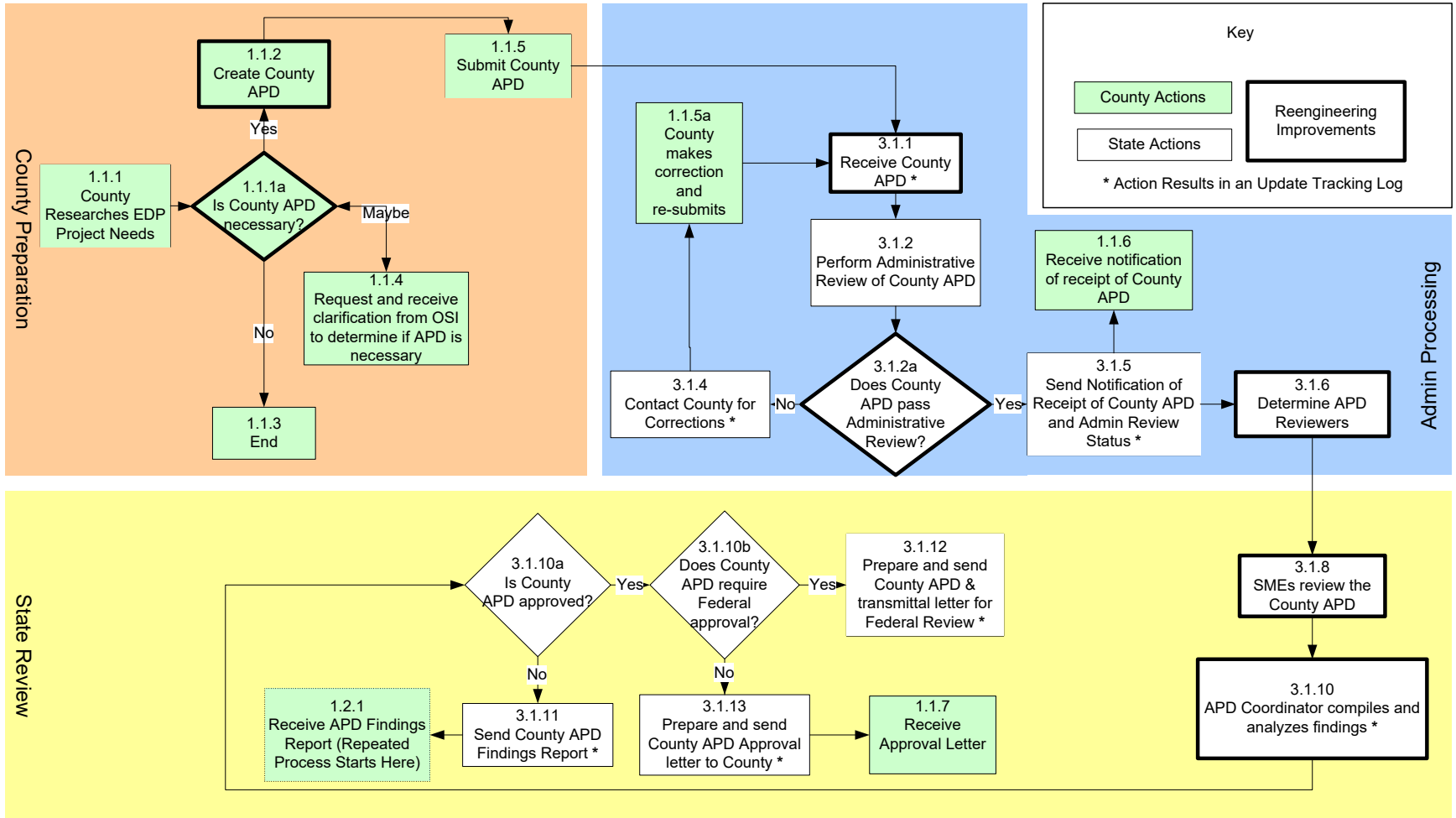
Module Objectives

- Provide a overview of the County APD workflow
- Highlight the County APD Re-Engineering Changes
- Provide an understanding of the APD review process expectations

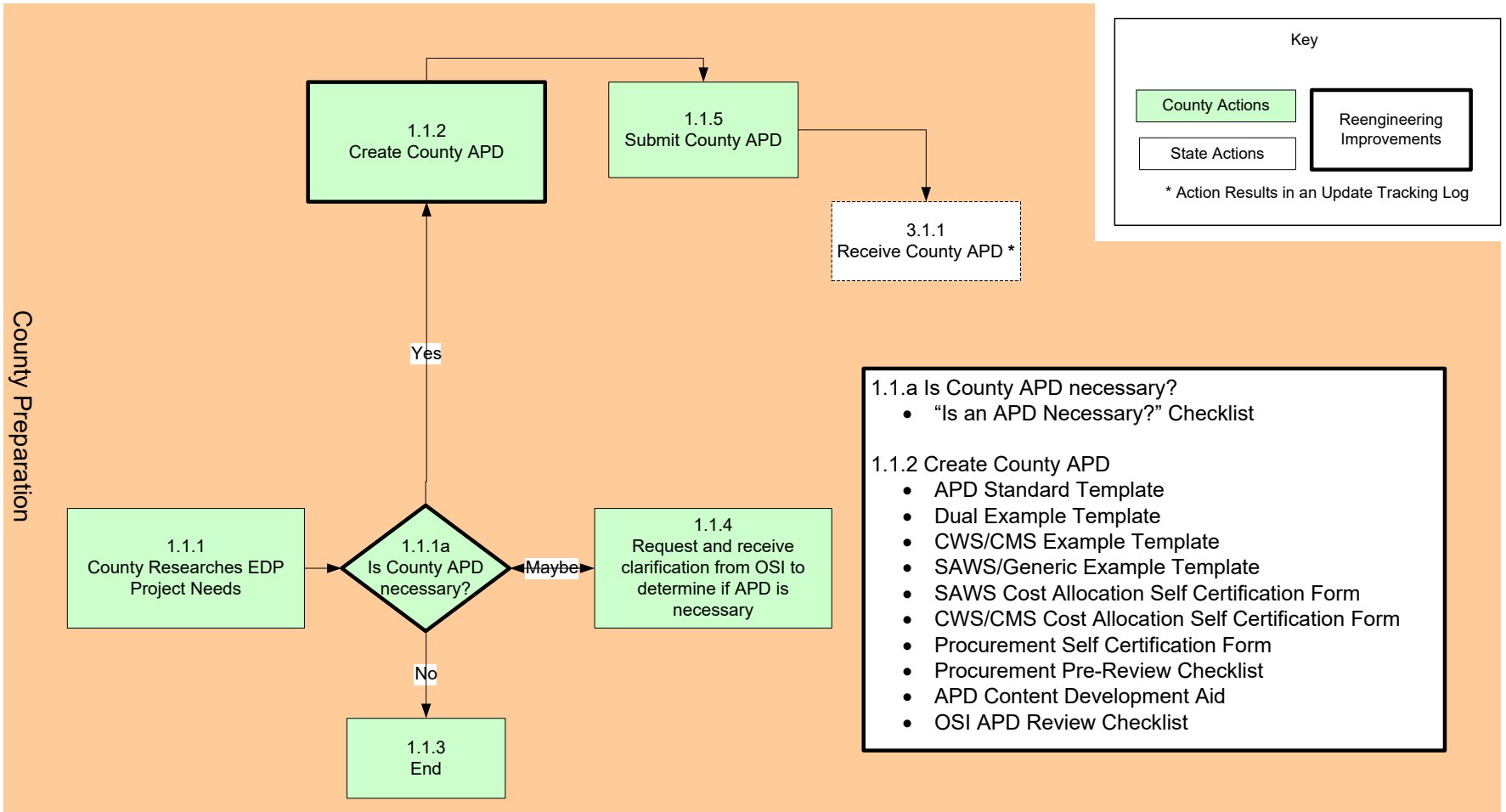
Major Topics

- County Initial Submission Workflow
- County Repeated Submission Workflow

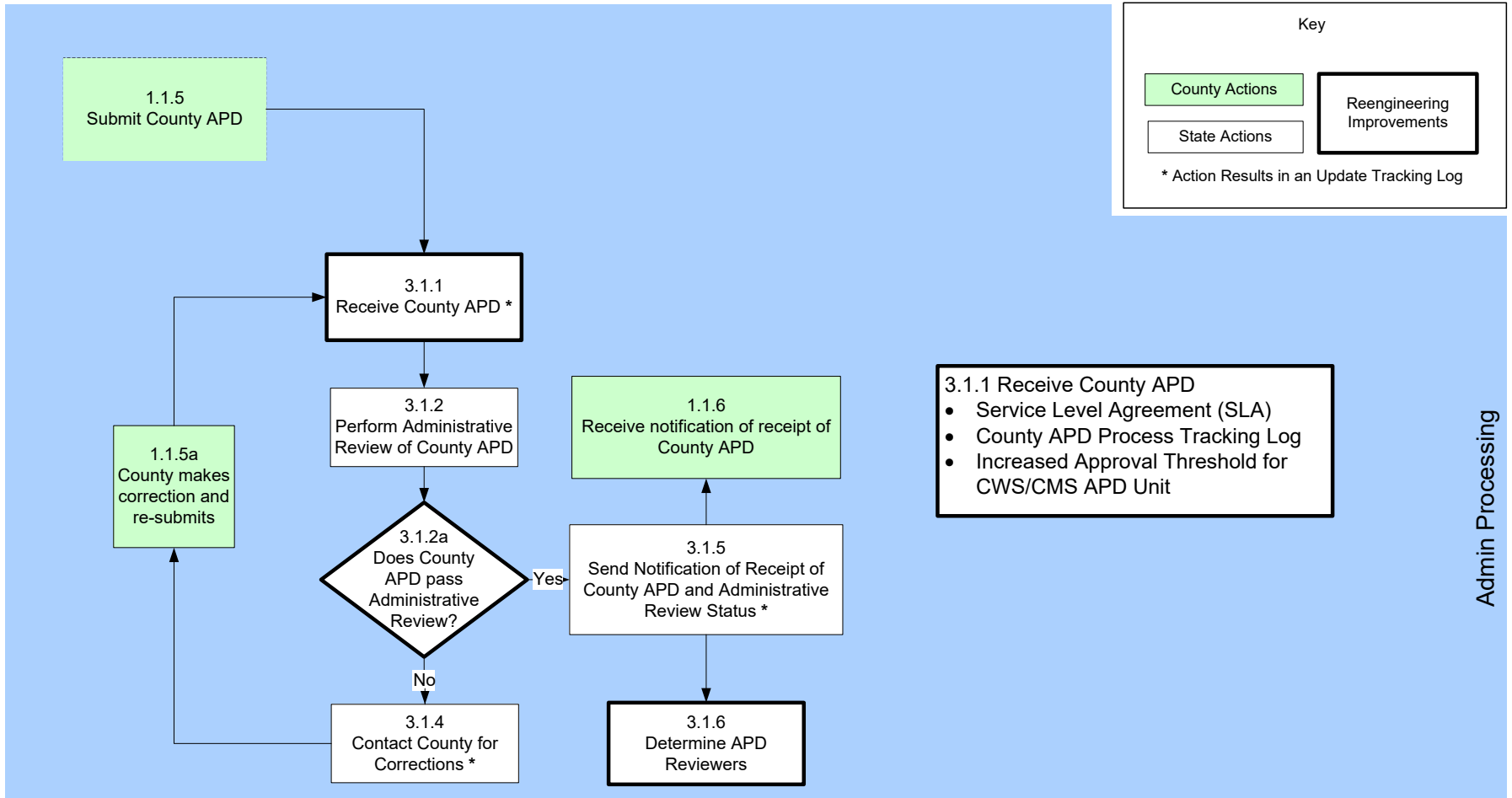
County APD Work Flow –Initial Submission



County Preparation –Initial Submission

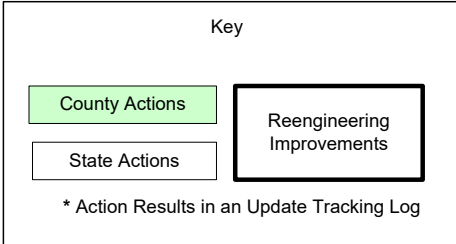


Admin Processing –Initial Submission

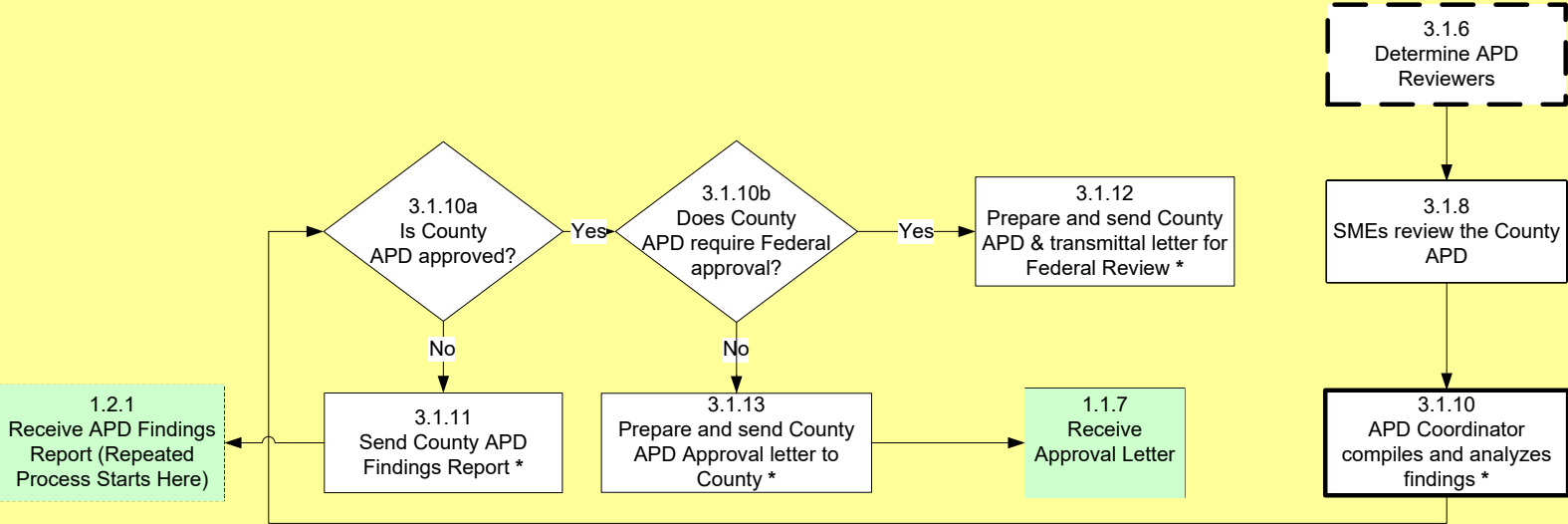


State Review –Initial Submission

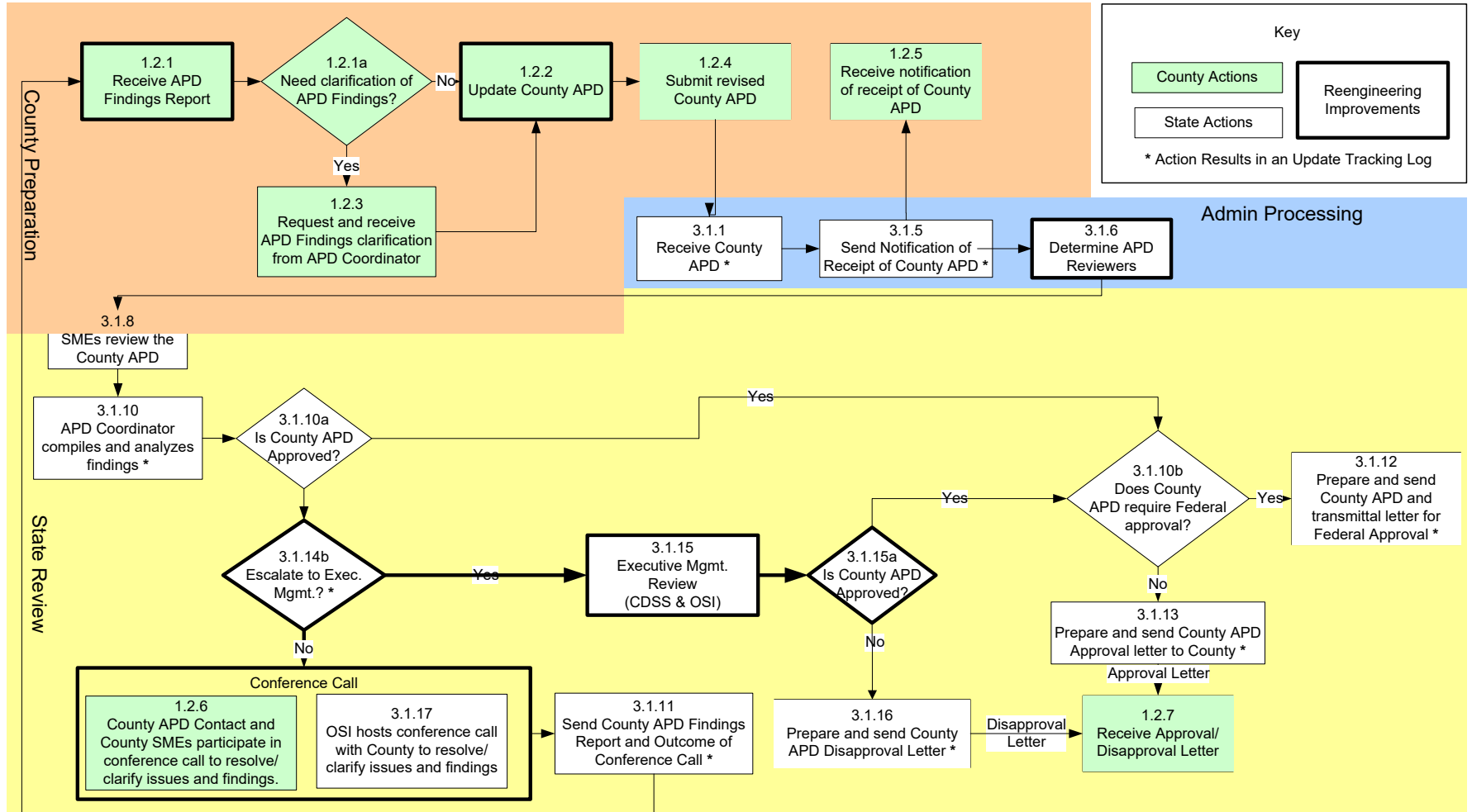
- 3.1.8 SMEs review the County APD
 - OSI APD Review Checklist
- 3.1.10 APD Coordinator complies and analyzes findings
 - County APD Recommendations and Findings Report



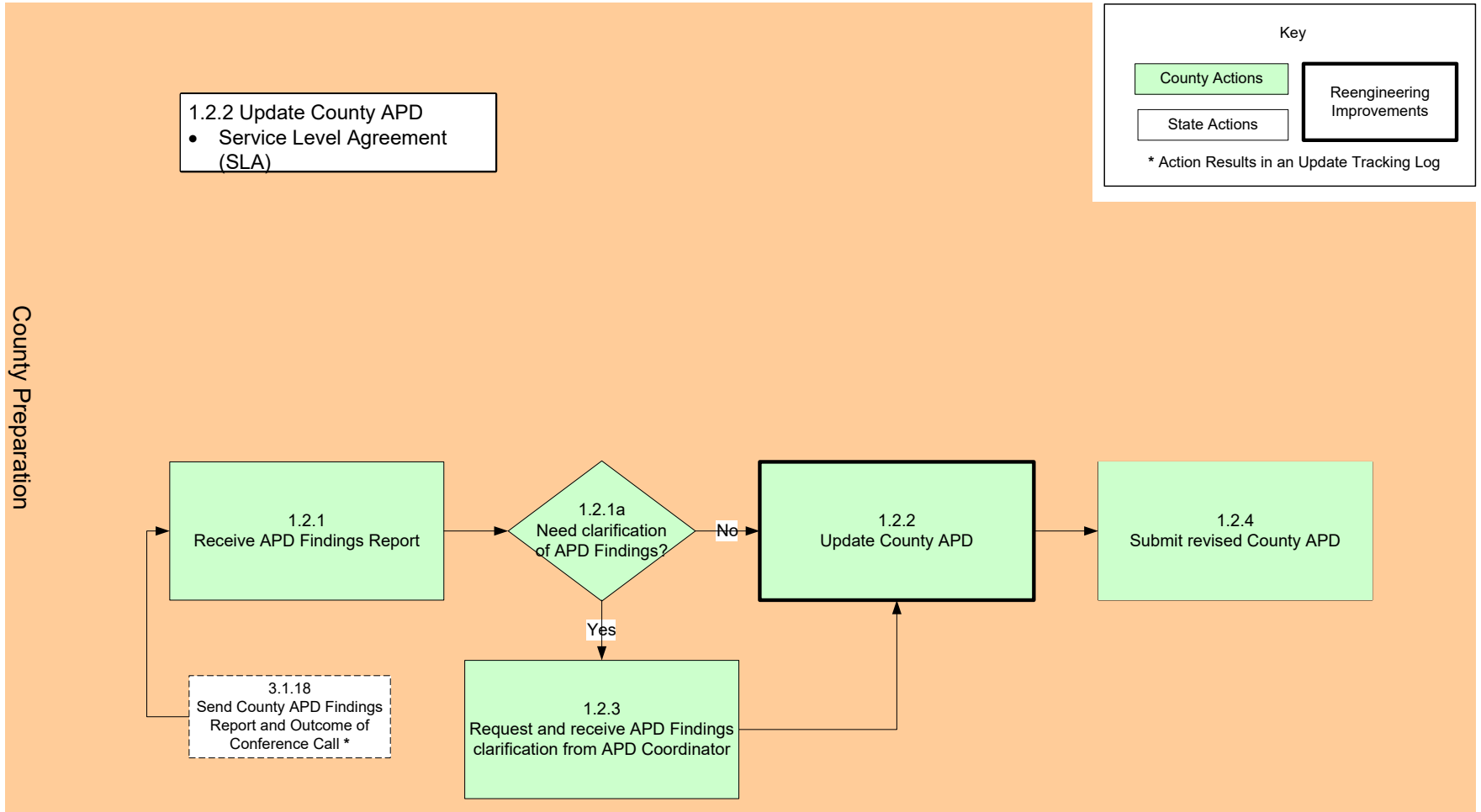
State Review



County APD Work Flow –Repeated Submission

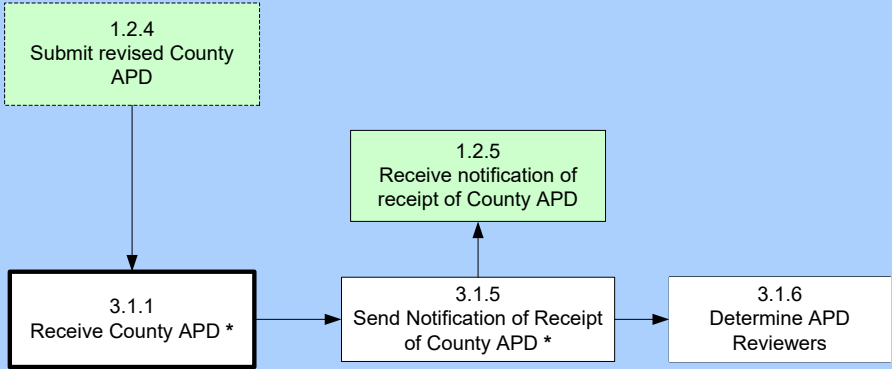
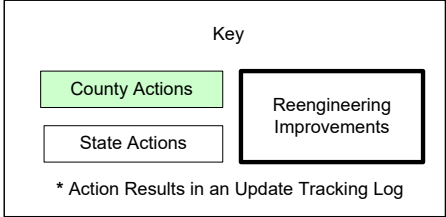


County Preparation –Repeated Submission



Admin Processing –Repeated Submission

3.1.1 Receive County APD
• SLA



Admin Processing

State Review –Repeated Submission

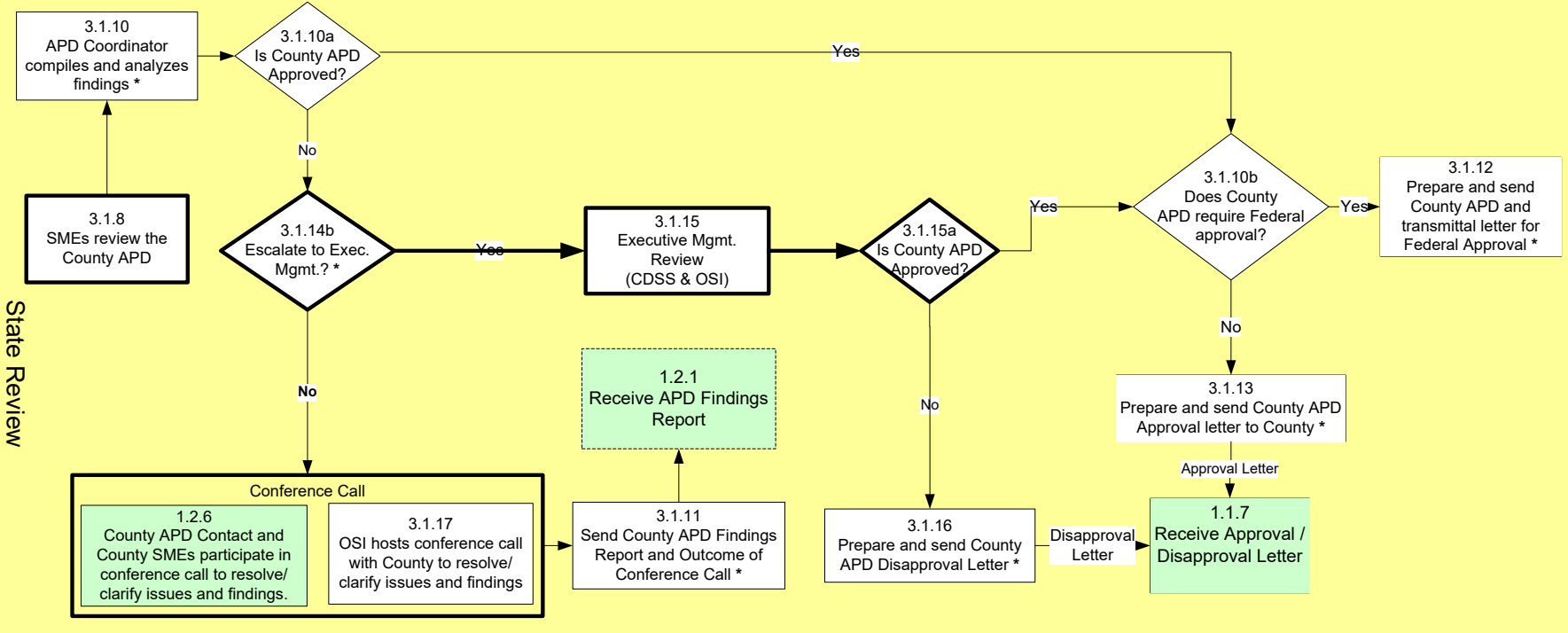
3.1.8
Service Level Agreement (SLA)
3.1.14b
Process Improvement: Disposition Escalation Process

Key

County Actions

Reengineering Improvements

* Action Results in an Update Tracking Log



Reference Information

- OSI County APD Workflow Deliverables and Associated County APD Process Notes located at:
<http://bestpractices.osi.ca.gov/countyapd/countyapd.aspx>

Thank You